

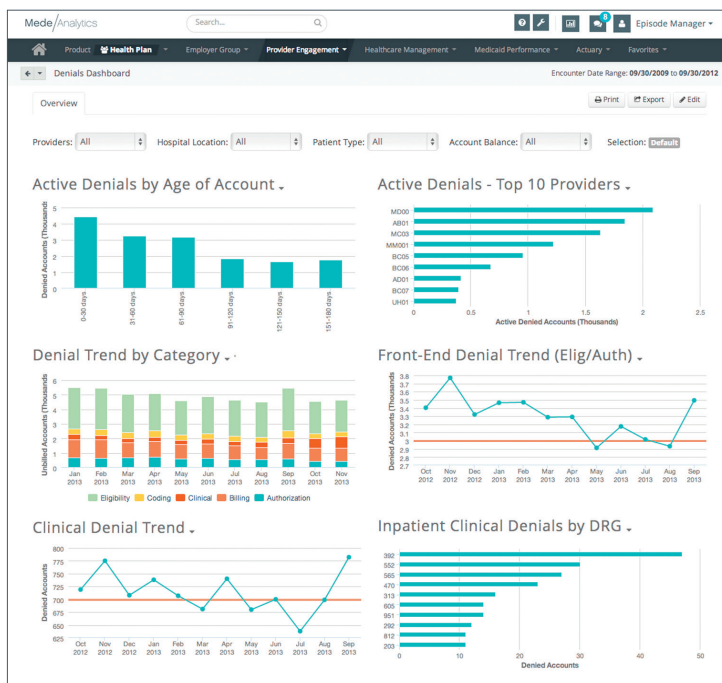
PROVIDER ENGAGEMENT

Mede/Analytics®



Collaborate with Providers to Reduce Costs and Improve Care

Improve provider communication and transparency by sharing insight into the claims lifecycle, risk scores, and value-based contracts. MedeAnalytics Provider Engagement creates a collaborative environment to increase cost-efficiency, improve provider satisfaction, ensure quality care, and benchmark physician performance—easing the transition to shared risk plans and the Affordable Care Act's risk adjustment program.



Reduce denials and appeals by evaluating their root causes

By Improving Transparency with Providers You Can:

- Collaborate to reduce costs and mitigate risk
- Boost provider satisfaction and promote a cooperative partnership
- Reduce denials, appeals, processing errors—and their administrative costs
- Manage the Affordable Care Act's risk adjustment program with ease
- Improve cost-efficiency and quality care by managing value-based contracts
- Profile and evaluate providers, categorize them by risk, and create tiered provider networks
- Pinpoint trends and outliers using executive dashboards—from your PC or iPad

PROVIDER ENGAGEMENT

/ WHO IS IT FOR? /

CEOs, CFOs, and network managers of health plans

/ WHAT DOES IT DO? /

Encourages provider collaboration by offering insight into claims data, risk scores, and value-based contracts

/ WHY DO YOU NEED IT? /

- Drive provider communication and transparency
- Lower costs while mitigating risk
- Reduce claims denials and appeals
- Improve provider satisfaction and performance

/ HOW DOES IT WORK? /

Data aggregation, web-based analytics, and risk score calculation create a shared data snapshot, viewable through executive dashboards

Reduce Costs and Mitigate Risk

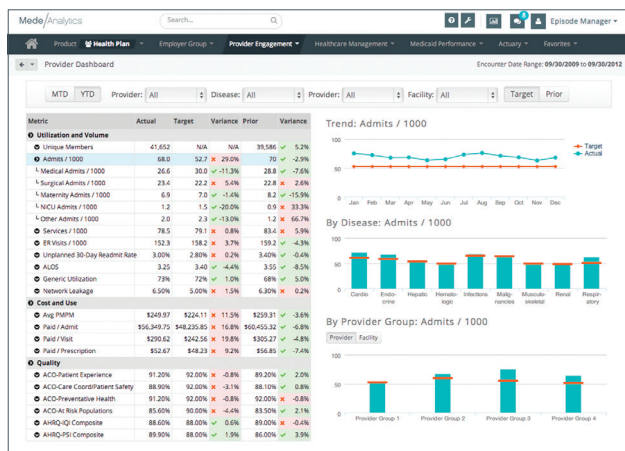
With a daily snapshot of claims data, you can work with providers to pinpoint cost drivers, monitor risk scores, and reduce denials, appeals, and processing errors. Provider Engagement identifies:

- Claim turnaround times
- Denial and appeal reasons
- Discretionary use of high-cost procedures and medications
- Other cost drivers such as readmissions and one-day stays

Improve Provider Collaboration

Ease the transition to risk adjustment programs by improving provider collaboration and communication. Use Provider Engagement to:

- Ensure efficient healthcare spending
- Create an environment of mutual partnership
- Boost provider satisfaction and transparency



Identify cost drivers and the providers who contribute to them

Build Optimal Provider Networks

Use clinical, financial, and quality of care insight to evaluate provider performance and establish tiered provider networks. Provider Engagement provides:

- Physician scorecards
- Benchmarks to identify top performers and underperformers
- Identification of cost and clinical efficiency

Provider Engagement with a Consultative Touch

You'll benefit from the consultative approach of our experienced performance management team who will tailor the technology to your needs, manage your implementation with ease, and ensure you derive ongoing value from your investment.



For more information about MedeAnalytics Provider Engagement, please visit www.medeanalytics.com/solutions/provider-engagement.

SUCCESS STORY

Blue Shield of California worked with Mission Hospital to reduce claims denials by 40 percent.

"Since they see the data sharing and collaborative work that happens, we don't have as much finger-pointing over claims disputes."

Juan Davila
Blue Shield of California

EVIDENCE-BASED ANALYTICS

MedeAnalytics Provider Engagement is part of a complete cloud-based solution suite that includes:

For Providers

- Compliance
- Executive Dashboards
- ICD-10
- Patient Access
- Population Health
- Revenue Cycle

For Health Plans

- Employer Reporting
- Medical and Medicaid Management
- Population Health
- Provider Engagement